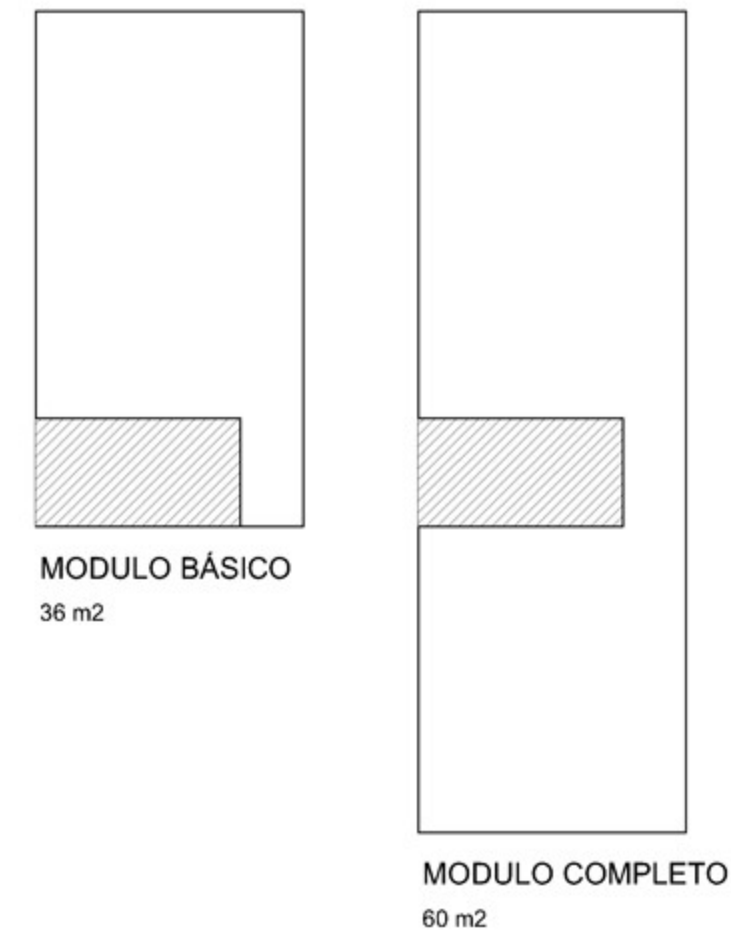
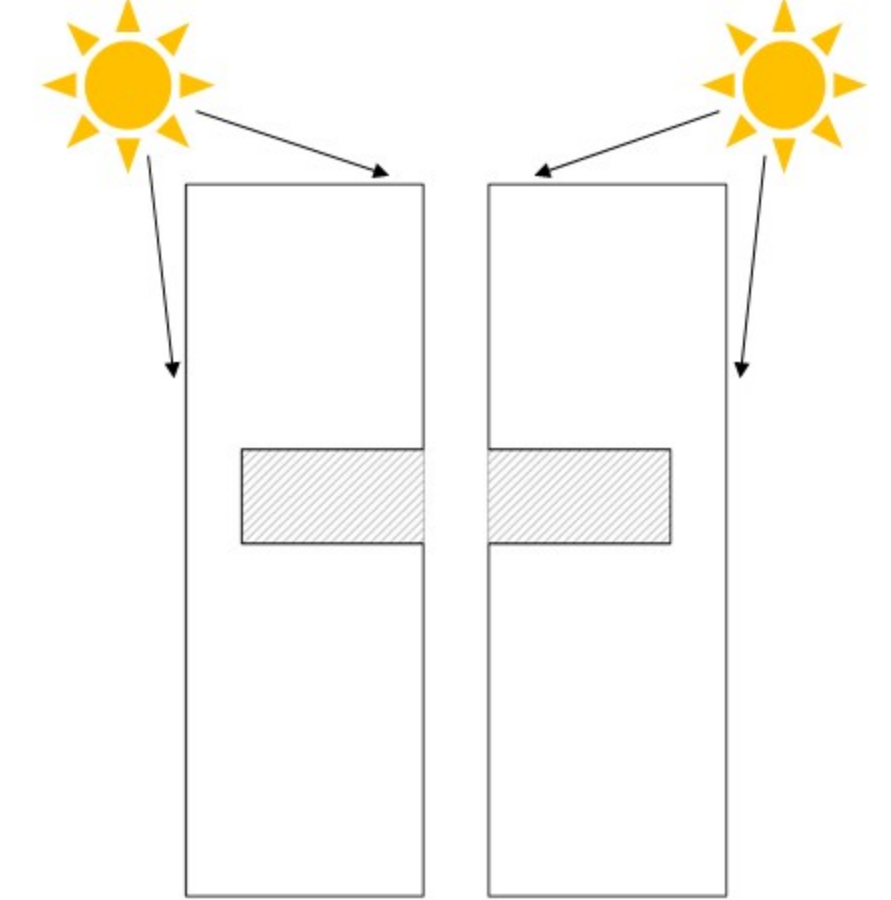




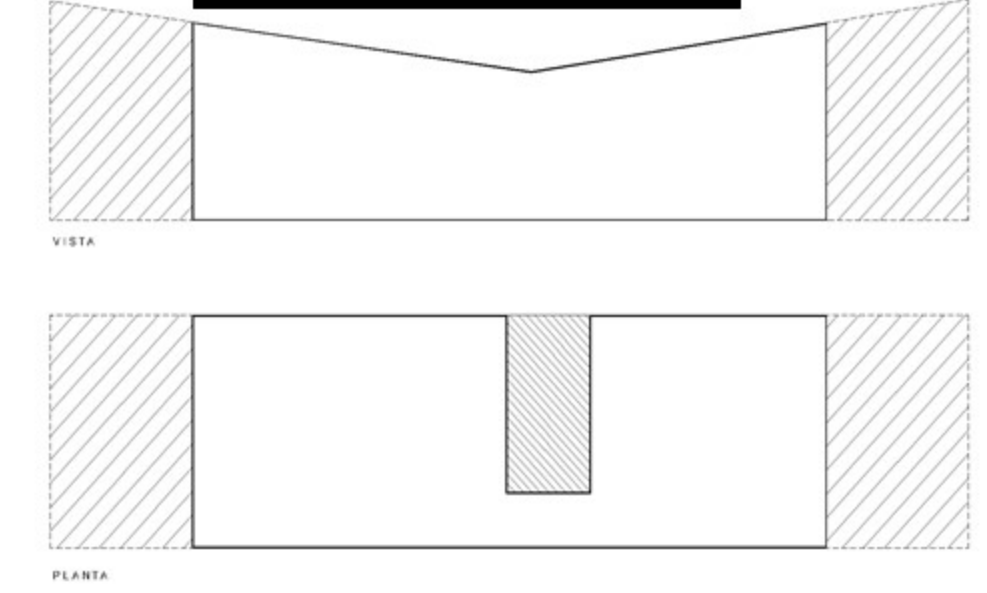
### MODULOS



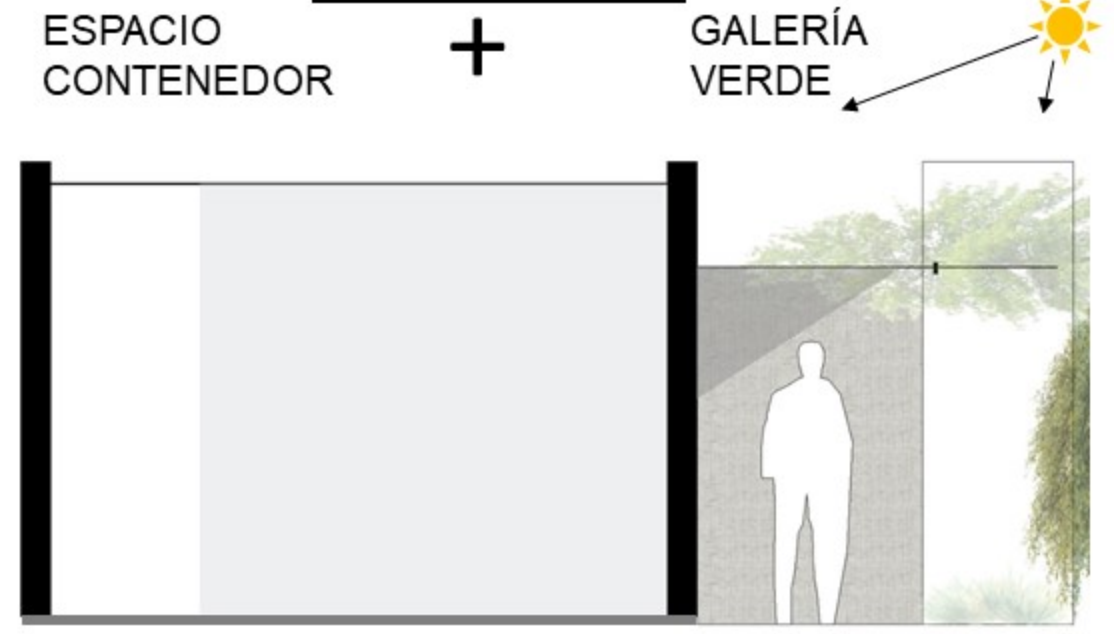
### IMPLANTACIÓN



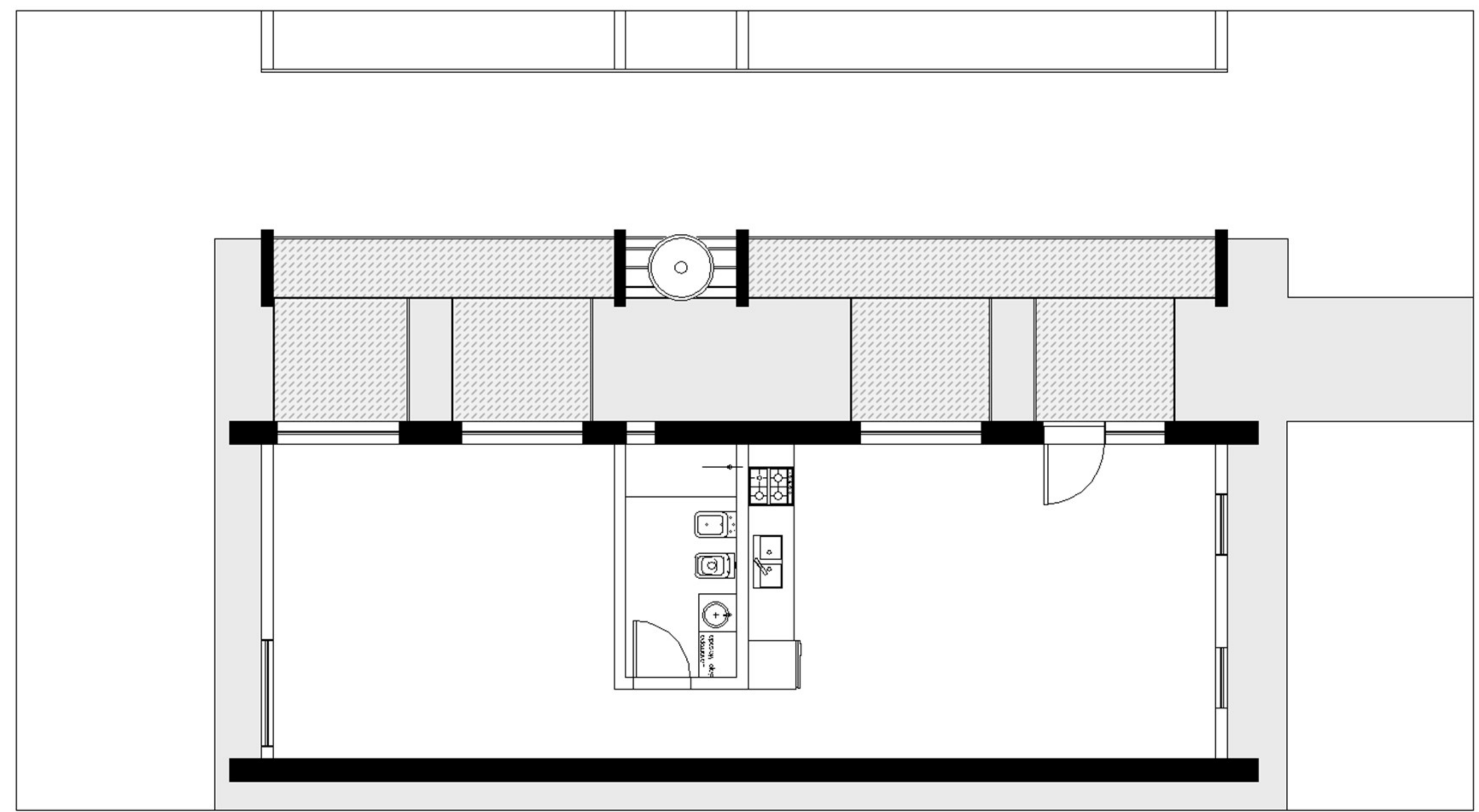
### CRECIMIENTOS



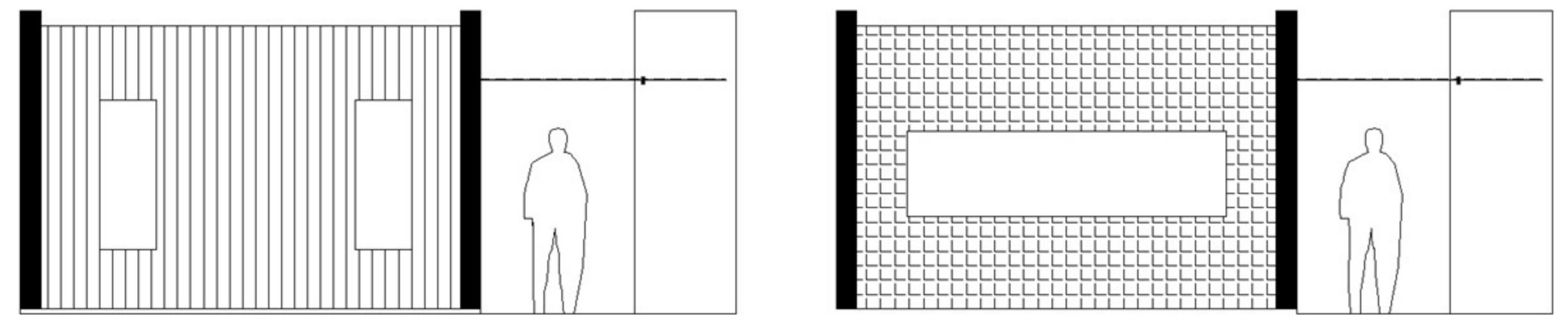
### IDEA



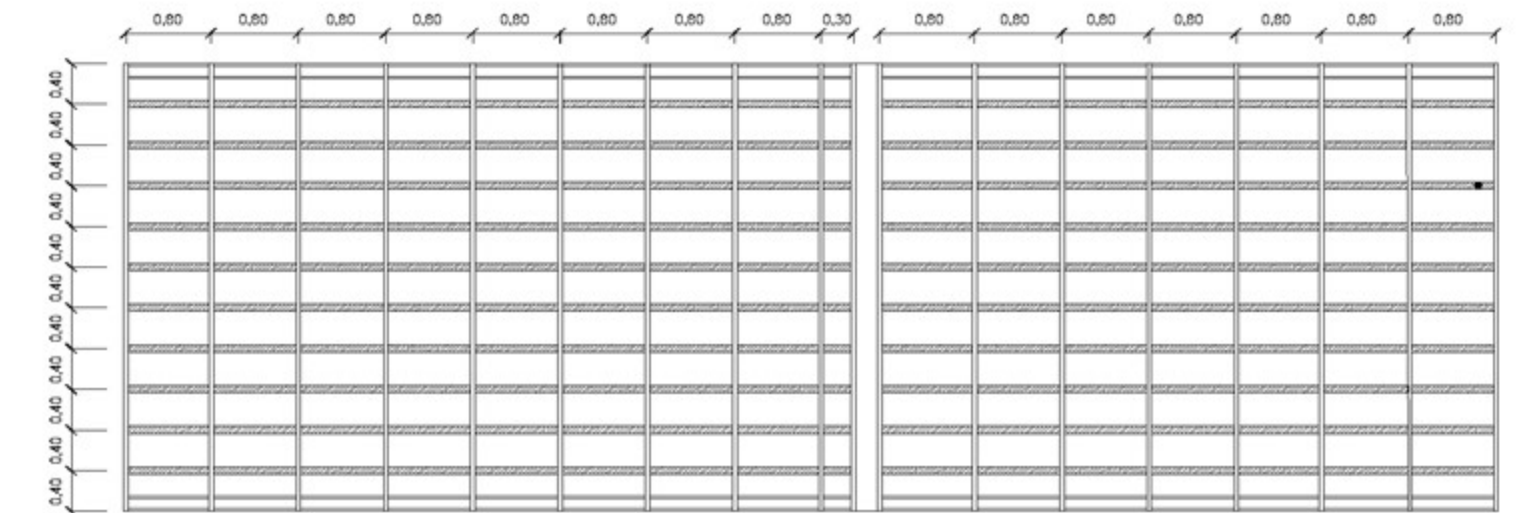
formas breves para desplegar ahí dentro todas las maniobras necesarias para vivir...



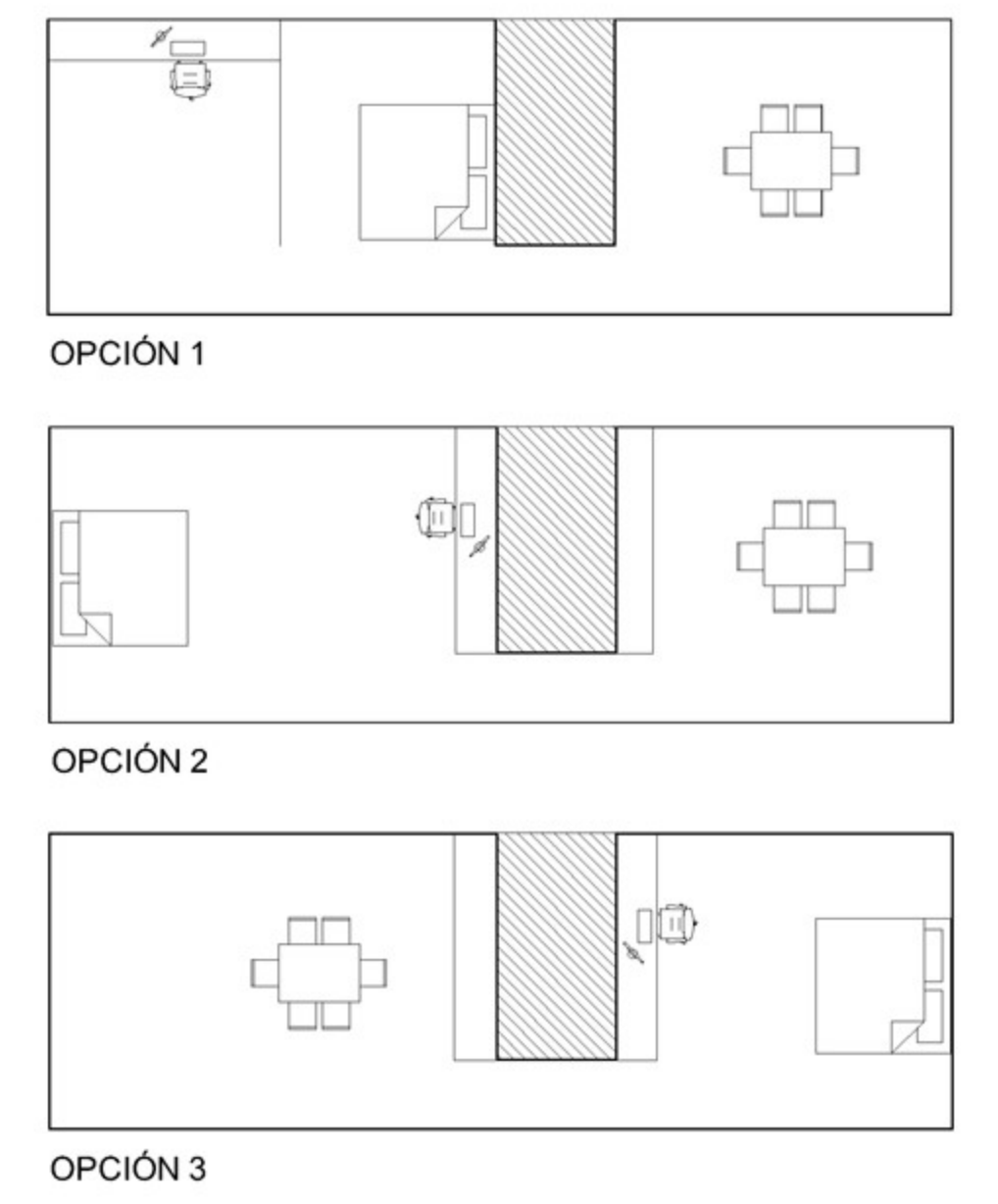
### VARIANTES DE FACHADA



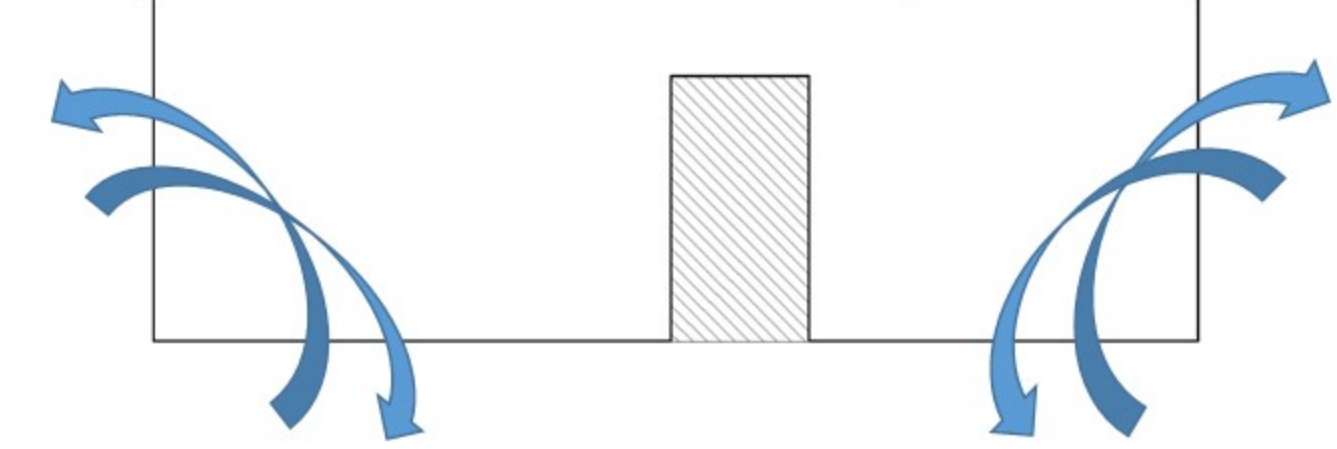
### MODULACIÓN



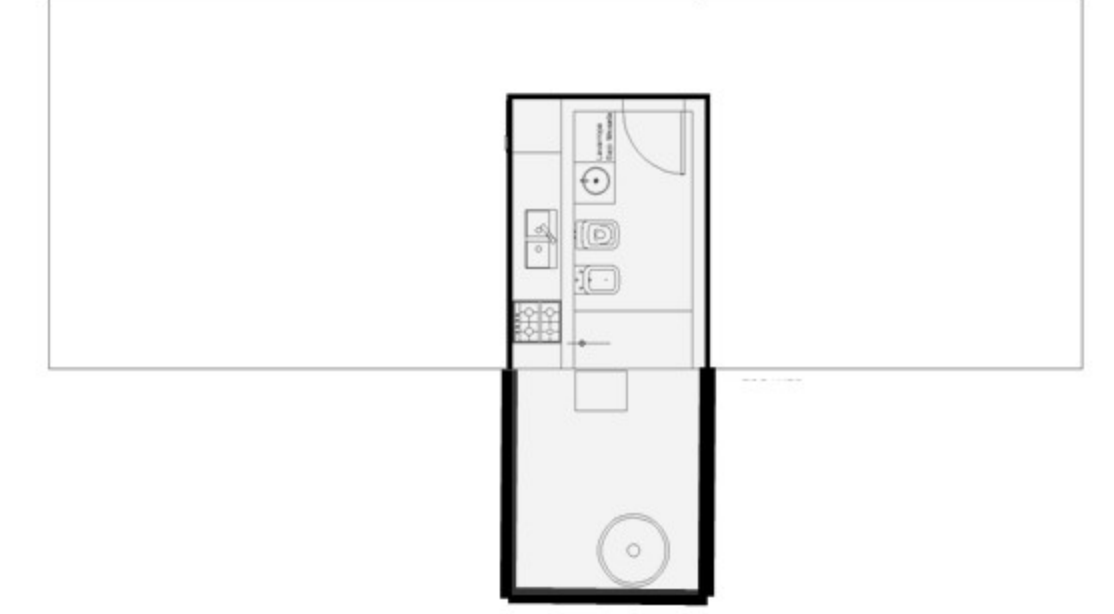
### ADAPTIBILIDAD



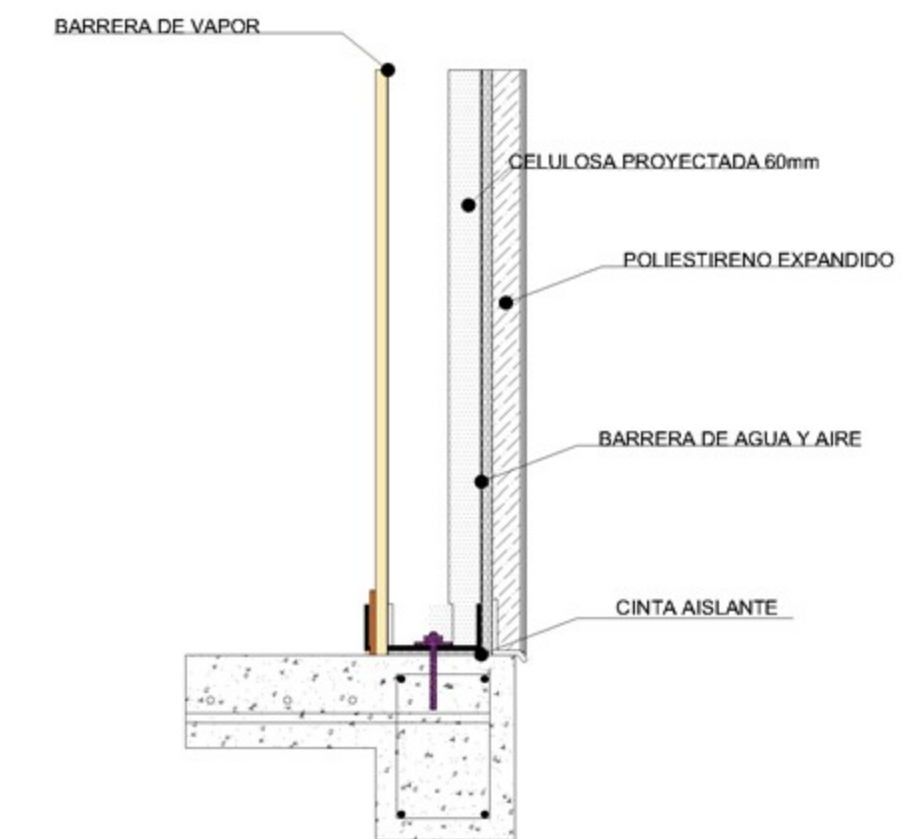
### VENTILACIÓN CRUZADA

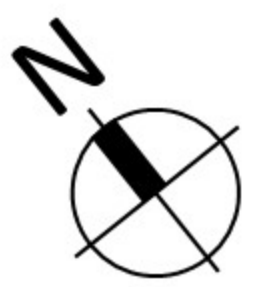


### NUCLEO HUMEDO



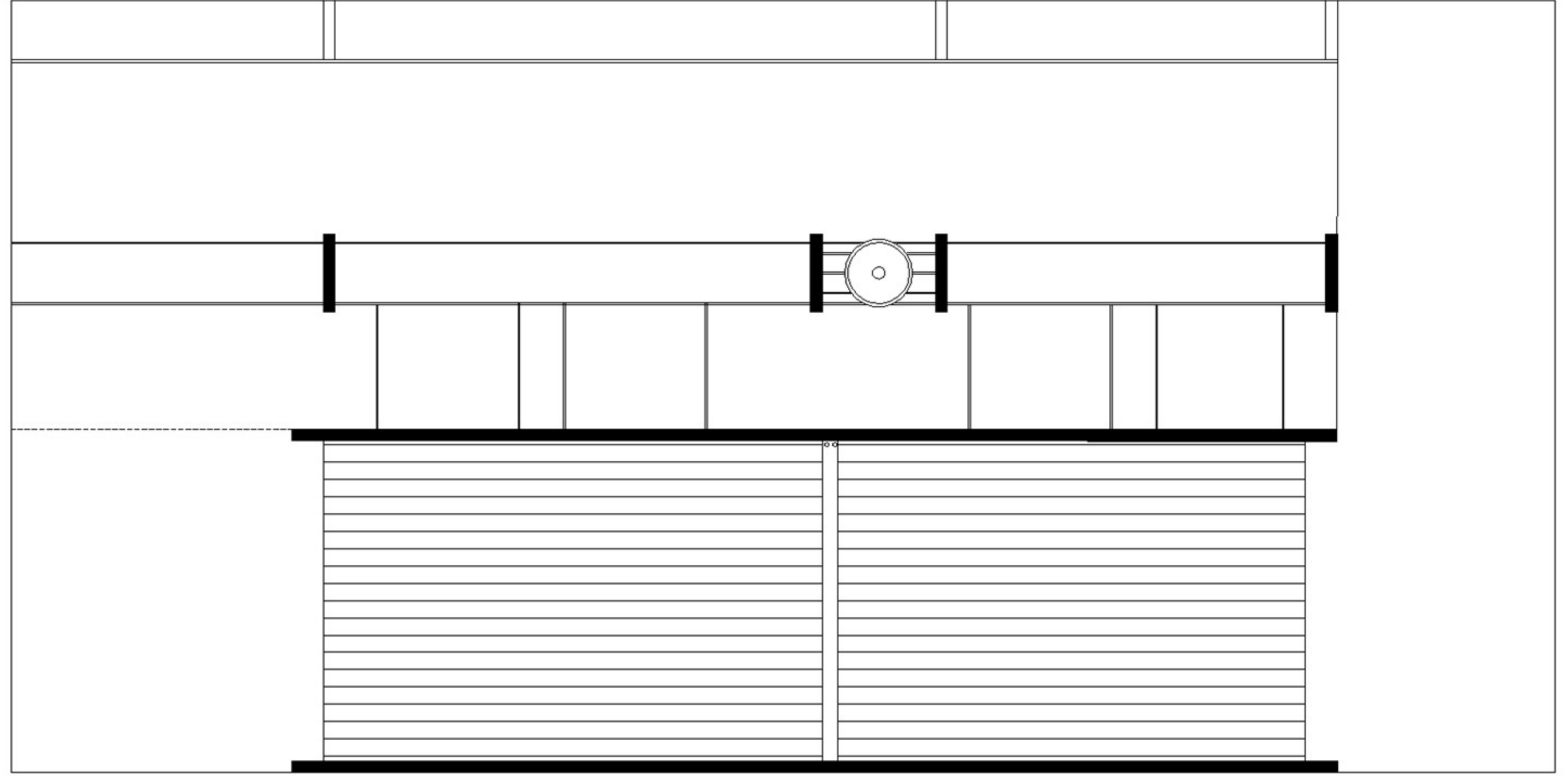
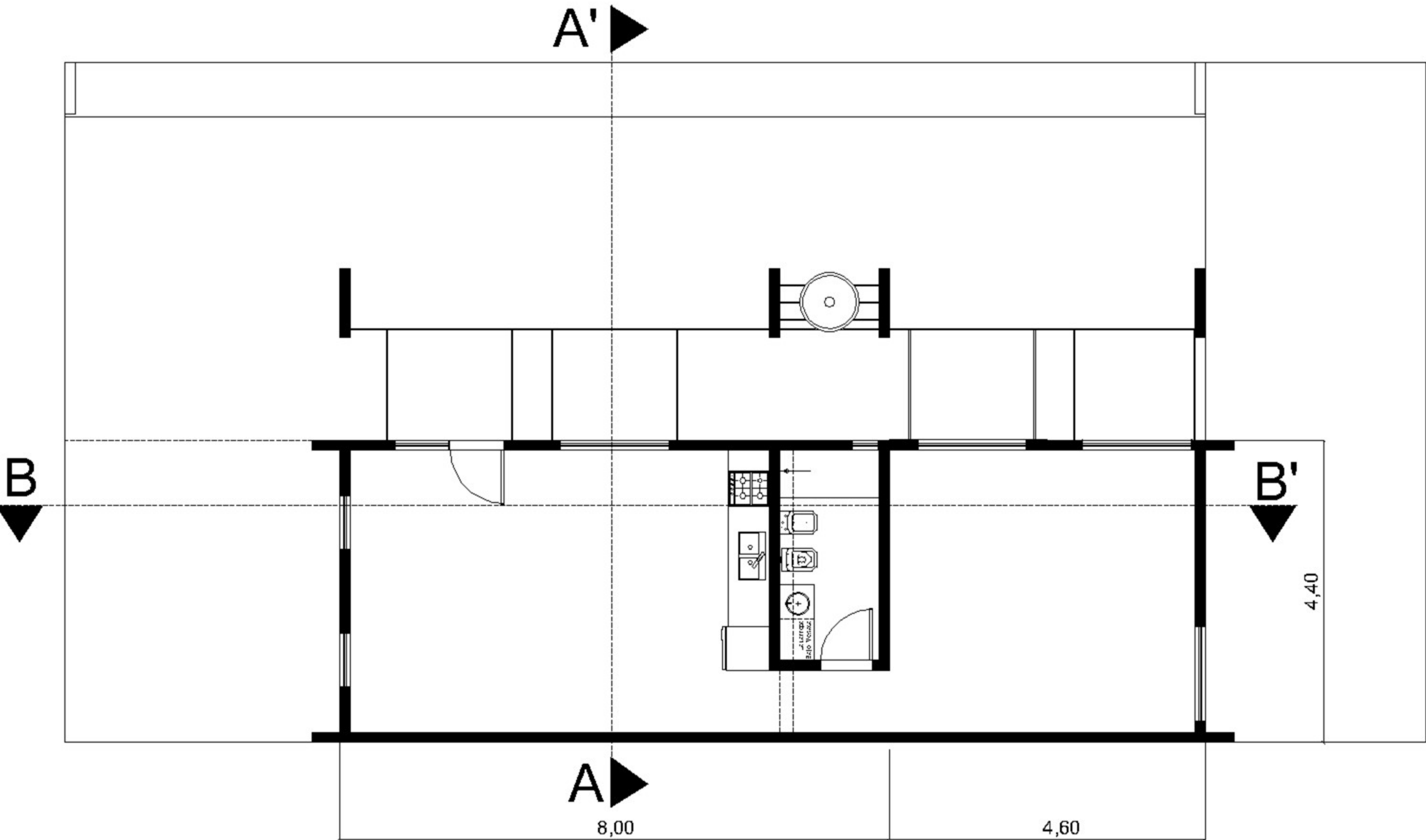
### AISLACIÓN





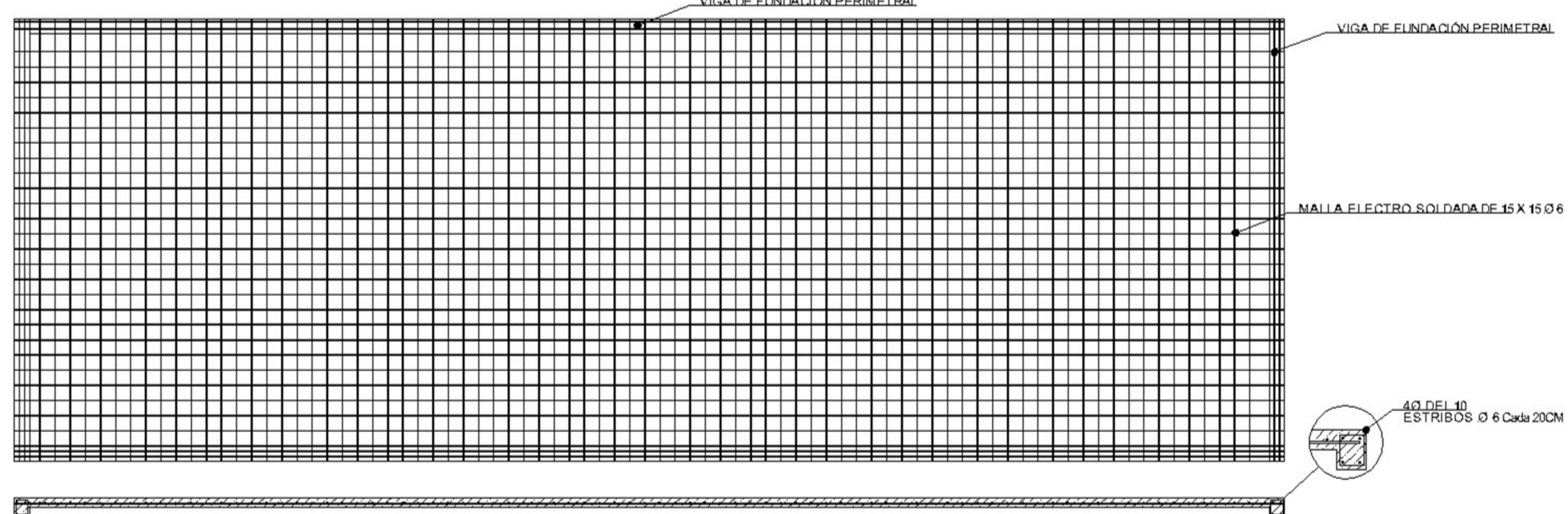
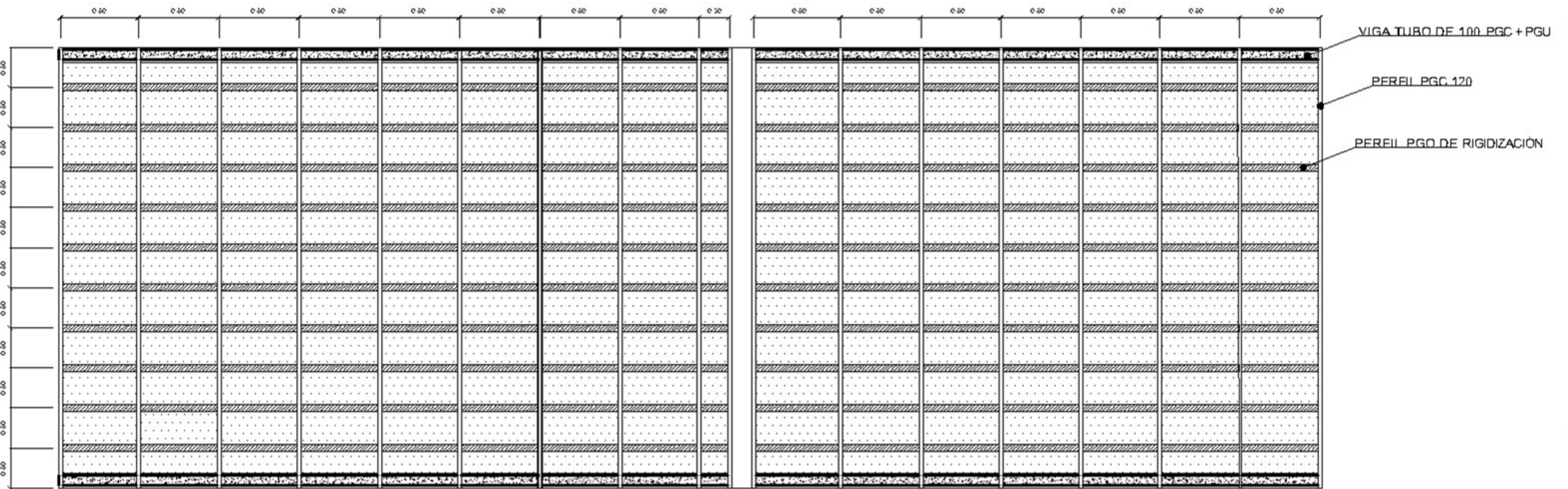
### PLANTA BAJA

### PLANTA TECHOS

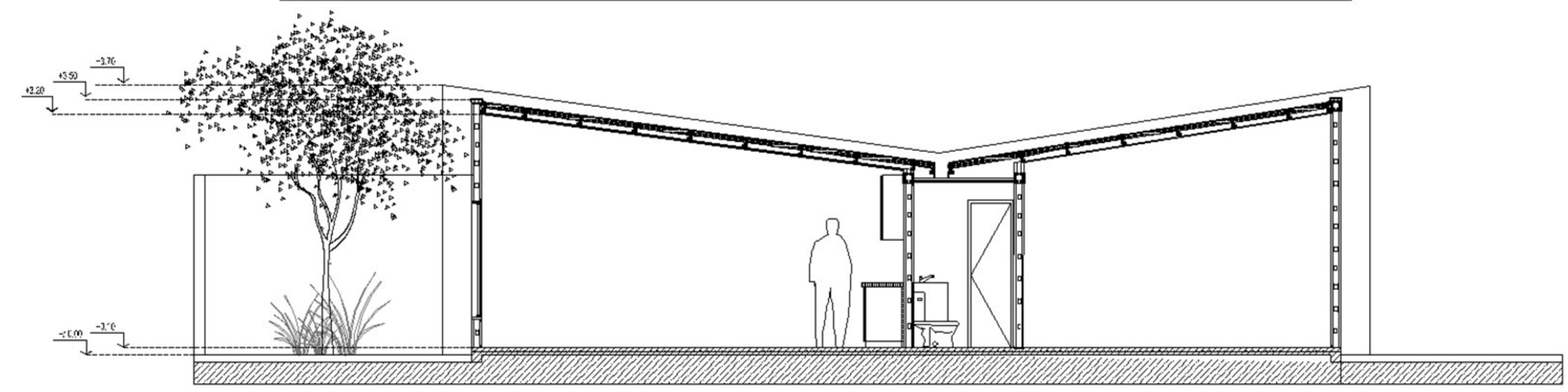
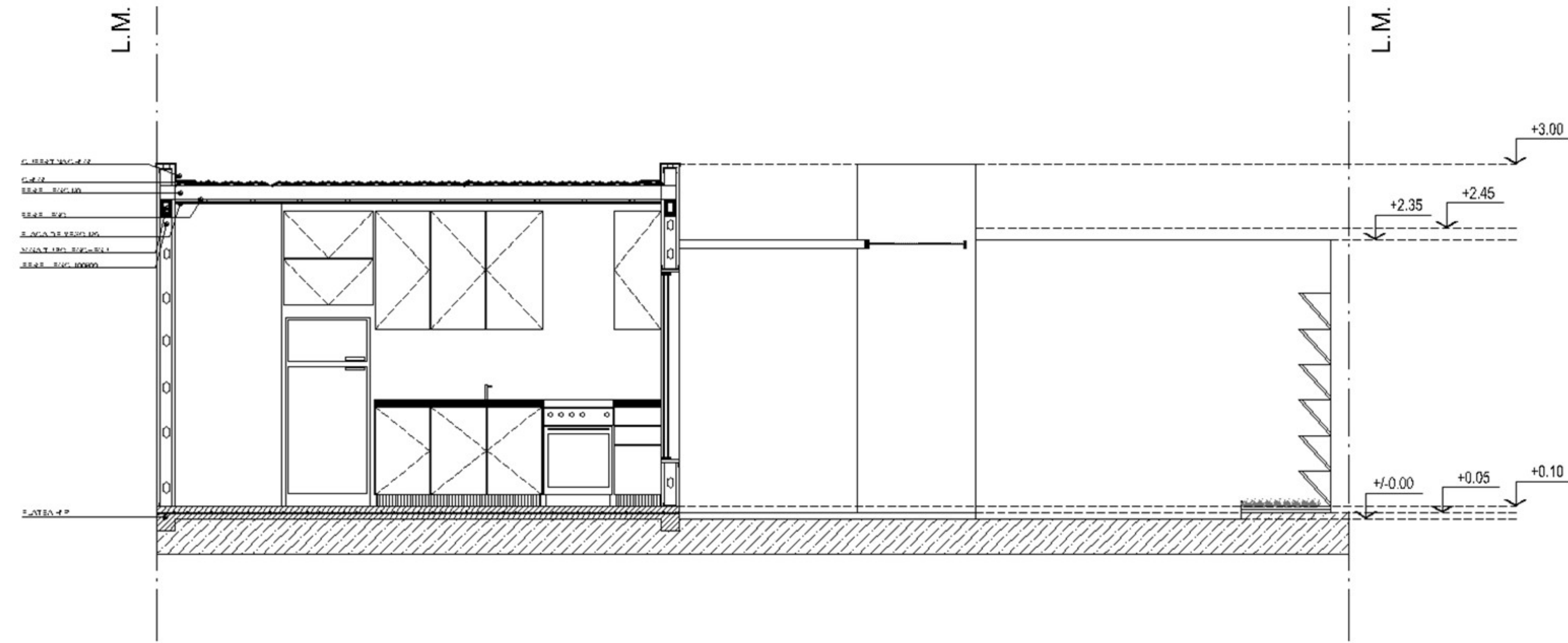
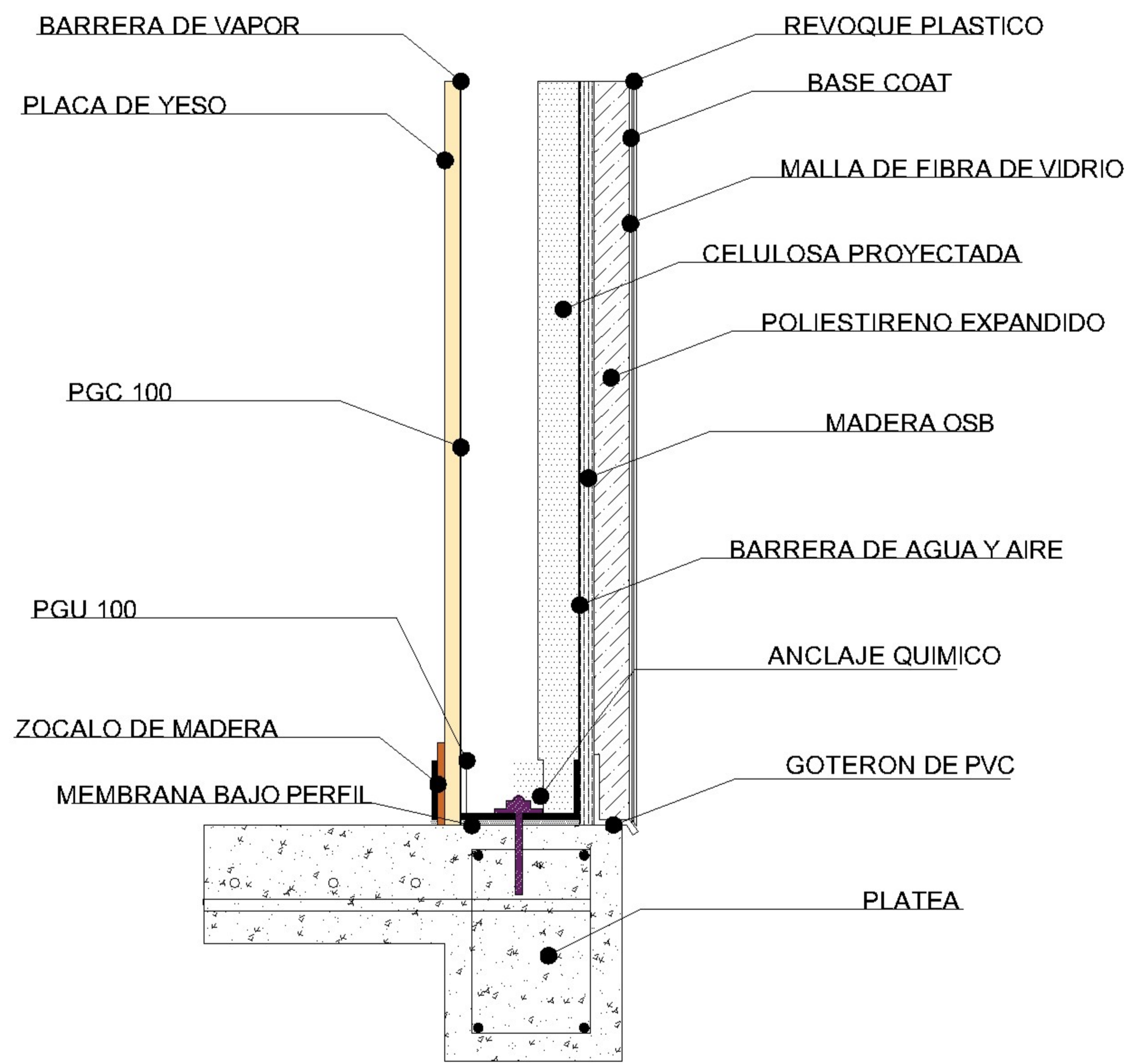
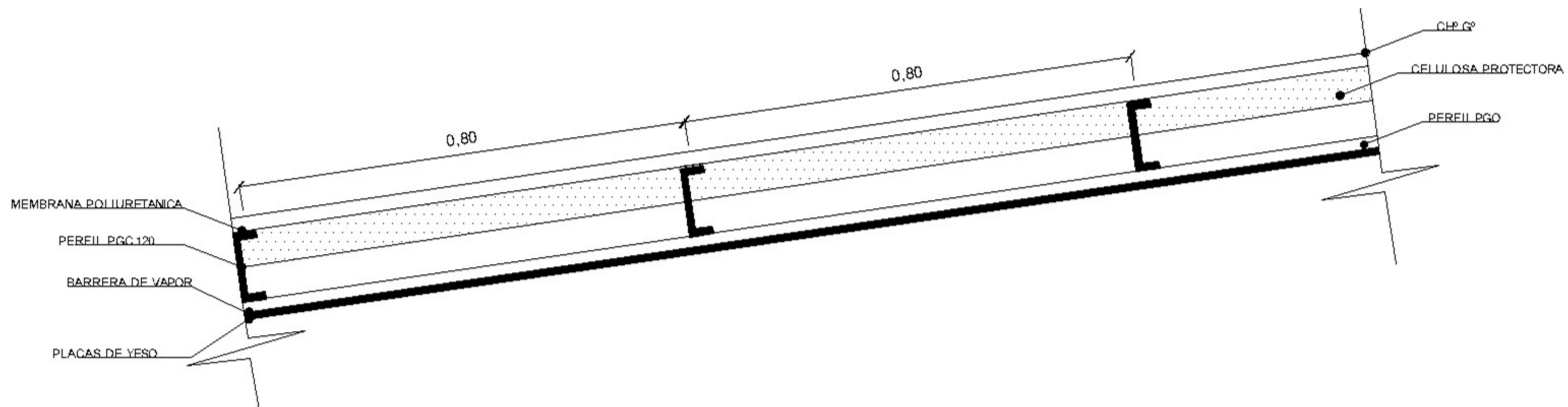
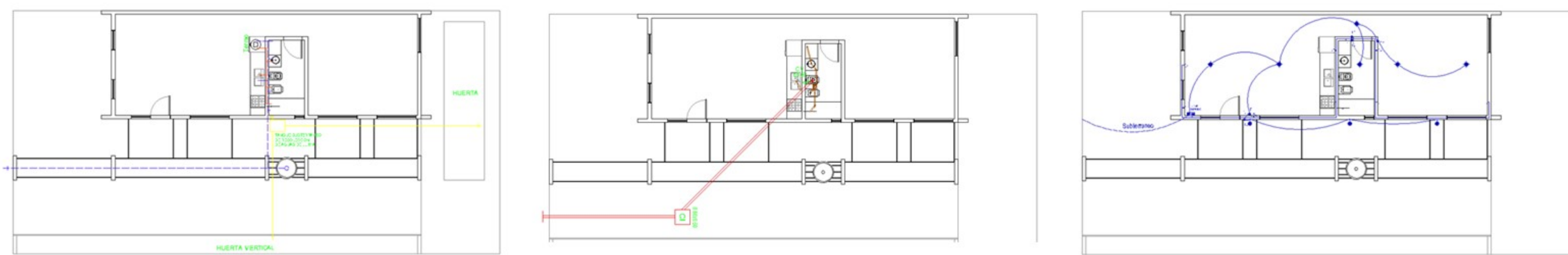


### ESTRUCTURA DE TECHO

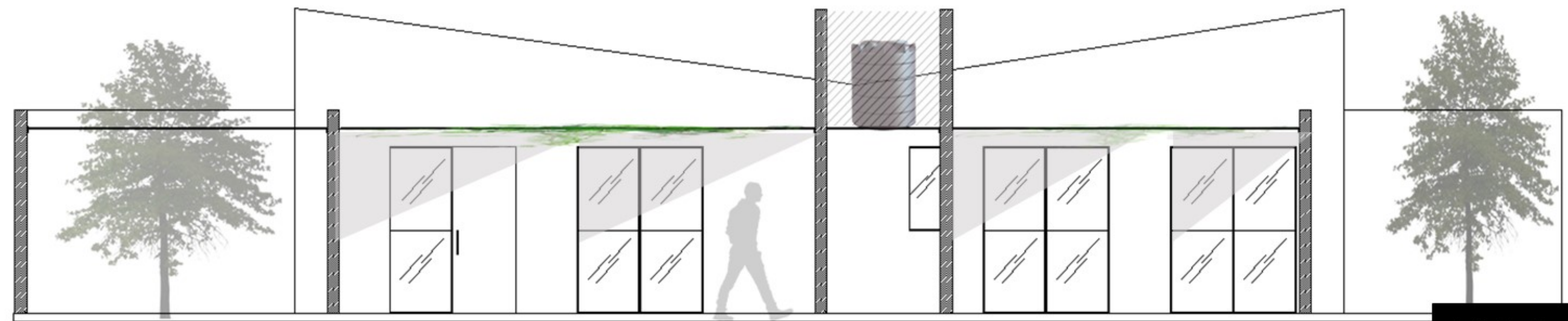
### FUNDACIONES



# ESQUEMAS SANITARIOS



**CORTE B-B'**



**VISTA B**

